



**TIME ACCESS SYSTEMS INC.**  
**Radio Frequency**  
**Identification (RFID)**



**AccessView™**  
**Software**



**Description**

AccessView™ Software application delivers an asset, personnel and vehicle monitoring solution, with integrated logging, tracking, alarming and reporting functions. AccessView is designed for use with the Access' ActiveTag™ Dual-Active RFID system to provide real-time event data. The software combines operator-friendly displays, flexible configuration and instantaneous query functions to offer a powerful tool for tracking movements and automatically controlling remote devices. AccessView™ has a range of applications, including resource management, asset protection, status monitoring and inventory logistics.

AccessView™, coupled with Access' ActiveTag™ dual-active product line, offers customers the ability to easily monitor and track asset and personnel movements throughout a facility. The system is based on a flexible control point architecture that allows the user to activate and identify tags at specific locations within the facility. Identification and location data broadcast by the tags is gathered by network receivers and forwarded to the AccessView™ application. The software time stamps, then displays and logs the event information in a general-purpose database where it can be accessed via standard queries and reports, including quick retrieval of "last seen" location and movement history. Additional reports and queries can be customized to the user's specifications.

**Features**

**Functional Linkage™** - assets or vehicles can be linked to personnel to allow authorized movement without alarming

**Operator Alerts** - pop-up windows provide instant notification of alarm conditions, exceptions alarms and alerts

**Data Management** - event data is stored in a Microsoft Access ODBC database for flexible customized report/query using an off-the-shelf report generator and integration into third-part software

**Network Leverage** - runs on the Windows platform, communicating with devices over the LAN/WAN using minimal bandwidth

**Open Architecture** - connects directly to network devices via industry standard RS-232 serial port or Ethernet TCP/IP network interfaces

**Configurable Display** - operator can selectively view event logs, real-time reads, stored images and alarm notification windows

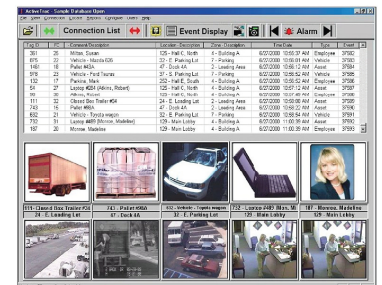
**Image Import** - administrator can associate stored images with tags for instant display and visual verification

**E-mail Alerts** - notification of alarm conditions, exceptions alarms and alerts can be sent via e-mail to any WAP enabled device

**Report Generation** - multiple reports can be generated from the captured RFID data from each location, such as alert, tag ID, zone, employee staffing, unauthorized access and movement of assets, historical movement of assets and personnel

**Minimum System Requirements**

- PC with 2.0 GHz CPU (or better)
- CD-ROM Drive
- 1 GB RAM (or better)
- 40 GB EIDE hard disk drive
- High speed EIDE disk controller interface
- Printer (optional)
- TCP/IP Connection
- SVGA Video
- Windows® 2000 or 2003 Professional OS
- TCP/IP LAN Card



Phone: 604-460-8670

Fax: 604-460-8690

E-mail: sales@timeaccessinc.com

Web: www.timeaccessinc.com